

## The Powerhost Control Panel

### How do I login to the Powerhost control panel?

To access the Powerhost control panel you will need:

- \* An Internet connection (NewNet ADSL is recommended).
- \* A web browser (for example Internet Explorer).
- \* Your Powerhost username and password.

1

Open your web browser, type "http://powerhost.newnet.co.uk" in the address bar and press enter.



2

Enter your username and password in the text boxes provided and click on "login" to continue.

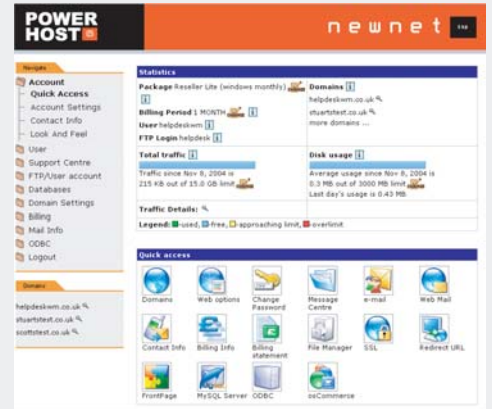


3

If your username and password are correct then you should be presented with the Powerhost quick access page.



### What is the Powerhost control panel?



The control panel is an online application that all Powerhost customers can access. It allows you to monitor and manage your Powerhost service using nothing more than a standard web browser. You can use it to create mailboxes, check quotas and much more!

### The Powerhost quick access page explained

#### Powerhost Account Information

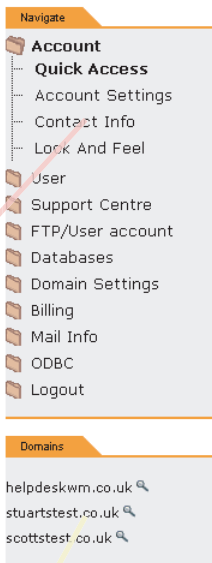
Check your Powerhost account type and billing preferences, with options to perform instant account upgrades.

#### Powerhost Account Statistics

Keep an eye on your Powerhost quota usage with a glance at the graphical Powerhost usage statistics.

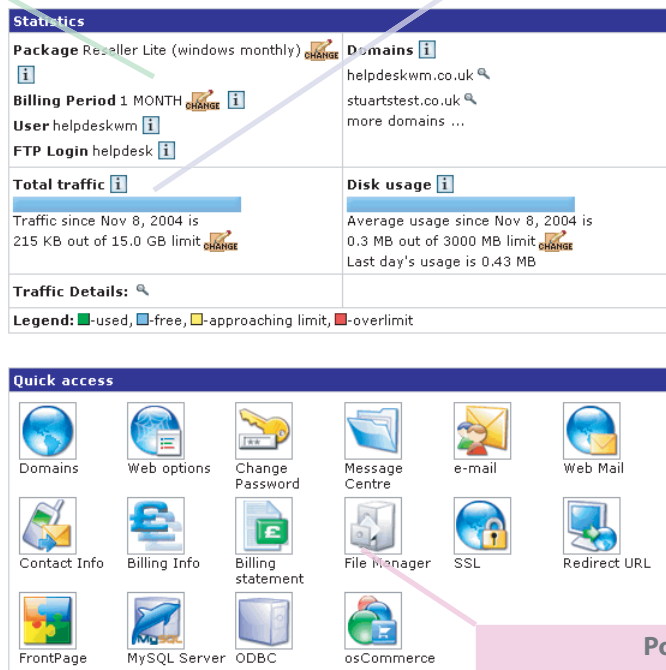
#### Main Menu

Access any Powerhost feature using the drop-down menu.



#### Domains List

Real-time listing of all the domain names hosted on your Powerhost account.



#### Powerhost Quick Access

Gain quick and easy access to the main features of your Powerhost account using the quick access icons.